



# RUACH Reports

Fall 2016 Newsletter, Issue #2

BS"D



  
 JOIN RUACH IN HONORING  
  
 WITH THE 'RUACH SPIRIT' AWARD  
 AND ENJOY A MUSICAL CELEBRATION WITH  
**LIL' REV AND ADAM MARGOLIS & THE FLYING CAMELS**  
 SUNDAY, DECEMBER 18<sup>TH</sup> 2016  
 \*HORS D'OEUVRE RECEPTION: 4:30PM • PROGRAM: 5:15PM  
 THE HARRY & ROSE SAMSON FAMILY JEWISH COMM UNITY CENTER  
\*KOSHER SUPERVISION BY WISCONSIN K  
**TICKETS AT \$10 AND \$18/PERSON**  
**RESERVE YOUR SEATS ONLINE AT: [RUACHMILWAUKEE.ORG](http://RUACHMILWAUKEE.ORG) or CALL (414) 367-4890**



Ms. Yaffa Karan, violin, playing for Sarah Chudnow Community Center residents

## ***A Valued Partnership—and a Growing Tradition of Free, Quality Entertainment and Activities for Seniors***

RUACH cherishes its long and fruitful, collaborative relationship with the Milwaukee Jewish Home and Care Center. In recognition of the Home's wonderful service to the community as well as its valued partnership with us, we are pleased to announce the Home as the recipient of our "RUACH Spirit" award and as the distinguished honoree on December 18th, at our annual benefit event. Thanks to the creative, flexible leadership at the Home—both professional and volunteer—we have been able to initiate and offer many enjoyable, stimulating programs to the residents and the community. The Home has been an exceptional partner and a critically important community institution. Information regarding event tickets and donations can be found on our on website, [www.ruachmilwaukee.org](http://www.ruachmilwaukee.org). Plan to join us for what we know will be a wonderful tribute, with great music, food, and more! **Need more information? Call 414-367-4890.**

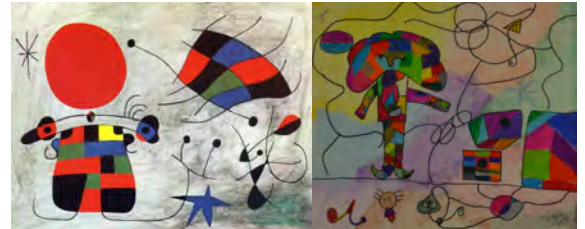
Thanks to generous contributors like you, RUACH has—almost since its inception—been able to offer regular activities and quality programs to seniors residing in Milwaukee Jewish Home and Care Center facilities (JHCC) and the community at large. Through the Rubin Sharpe Tribute Series and the Yiddish Music Series, top local and national musical performers and lecturers have regularly entertained and stimulated our audiences with their talents and knowledge. *The series has featured memorable concerts by Milwaukee Symphony members, including Todd Levy, Megumi Kanda, Robert Levine, William Helmers, Benjamin Adler, and Israeli pianist and MSO Assistant Conductor Yaniv Dinur. Wonderful performances by other prominent and popular artists and lecturers have featured Jeannie Yu, Stefan Kartman, Stefanie Jacob, Randall Ruback, Adam Margolis and Friends, Rabbi Melech Lensky, and Rabbi and Rebbetzin Michel Twerski, as well as acclaimed native Milwaukeeans baritone Jason McKinney and violist Wendy Richman.*

Through RUACH's Core Partner Programming and Project: VITAL (see p.2), residents have also participated in heart-warming inter-generational activities with students from several different area schools. Residents have enjoyed RUACH students' various arts-related activities such as skits, artwork, and choral and instrumental music. Check our website for upcoming concerts and activities!

# Project: VITAL Celebrates Cultural Diversity

A key component of RUACH's programming is Project: VITAL (Values In The Arts & Life). Using different artistic elements, such as visual arts, music and theater, RUACH's Project: VITAL 2015 helped students from many schools in the Greater Milwaukee area celebrate cultures from around the globe. Residencies with eight such schools culminated in an extraordinary closing ceremony in December, 2015, showcasing various kinds of work from the participating schools. A narrated slideshow of student illustrations of the book "The Lotus Seed" by Sherry Garland, accompanied the moving story of a young girl who is forced to make a difficult move to America from her native Vietnam—and her discovery of personal strength in continuing her traditions and honoring her culture.

The students' artistic involvement covered a wide range of styles, from watercolors à la Chinese brushwork art, to creating illustrations in the style of Jewish, Russian-French artist Marc Chagall, to the iconic style of Spanish artist Joan Miró, to the Nepalese style of Madhubani Art.



Left, original Joan Miró painting; right, student's Joan Miró style illustration of *The Lotus Seed*

Musical entertainment by students from two schools featured selections learned in their Project: VITAL workshops. A drum circle demonstrated the beauty and intricacies of the African and Middle-Eastern drum beats. With the engagement of the audience, the entire crowd celebrated the people behind the musical traditions.

**Project: VITAL is RUACH's artist-in-residence program that provides Jewish values-based arts workshops to schools, organizations and institutions throughout Greater Milwaukee. Participants learn about and express these values using various artistic media—visual arts, music, and theater. The featured value for 2015 was *cultural diversity*.**

Rounding out the stimulating event were a stop-animation video created through 'Tales That Unite & Delight: A Jewish Story Project,' and a dramatic adaptation of a familiar Russian folk tale entitled, "The Turnip." The play's theme focused on the strength and importance of our roots and the benefits of coming together as a community to reach our goals.

It was clear from the closing ceremony that the students had learned an important life lesson: when we celebrate our differences and work together, we can achieve beautiful and wonderful things. Bringing together the contributions from all eight schools produced an event that was thoroughly delightful for students and audience members alike!

## 2017 SHERMAN PARK ARTS FESTIVAL

As many of you know, Sherman Park is RUACH's original home. It's a diverse, rich community made up of the varied populations RUACH is committed to serving as part of our mission, especially schools and community members who may not have access to arts opportunities found elsewhere in Greater Milwaukee.

For a number of years, RUACH has been intrigued by the possibility of staging a Sherman Park Arts Festival. The widespread attention given to last summer's disturbances in Sherman Park has reconfirmed the need to fulfill RUACH's dream of organizing a community-wide arts festival, a dream shared by a large and varied group of area residents and our supporters. There are many who recognize the great potential such a festival would have, particularly to help to draw this vibrant community together.

We are excited to share the news that RUACH is beginning to plan such a festival for 2017, to include a concert, art exhibit, and educational opportunities! Watch our website, [www.ruachmilwaukee.org](http://www.ruachmilwaukee.org), and stay tuned for more news on this exciting and important effort.

# Help Launch RUACH's 2016-17 Annual Campaign!

Note: To purchase tickets for the event on December 18, honoring the Jewish Home and Care Center, please visit the RUACH website, [www.ruachmilwaukee.org](http://www.ruachmilwaukee.org), or call 414-367-4890.

If you would like to make a donation to RUACH, please mail this form with your check to RUACH, Inc., 6310 N. Port Washington Road, Milwaukee, WI, 53217, or visit our website (see above). To make a donation in honor or memory of a specific institution or individual, please email the details to [general@ruachmilwaukee.org](mailto:general@ruachmilwaukee.org).

I/We would be pleased to make a commitment at the following level:

\_\_\_\_\_ You are a RuACH star!—\$5,000 and above

\_\_\_\_\_ Encore!—\$2,500-\$4,999

\_\_\_\_\_ Bows and Curtain Calls!—\$1,000-\$2,499

\_\_\_\_\_ On the Podium—\$540-\$999

\_\_\_\_\_ On Stage—\$360-\$539

\_\_\_\_\_ In the Studio—\$180-\$359

\_\_\_\_\_ Behind the Scenes—Up to \$180

My/Our gift amount \$ \_\_\_\_\_

If this is a pledge, please initial here \_\_\_\_\_ Please make checks payable to RUACH, Inc.

Donor Name(s) \_\_\_\_\_

Please list as \_\_\_\_\_ for RUACH donor recognition.

RUACH, Inc., 6310 N. Port Washington Road, Milwaukee, WI, 53217  
[www.ruachmilwaukee.org](http://www.ruachmilwaukee.org) Questions? Call 414-367-4890

RUACH is a 501(c)(3) organization; donations are deductible to the fullest extent of the law.

## THANK YOU FOR YOUR SUPPORT!





## A message from the RUACH Board Presidents

Dear RUACH friends,

Welcome to our brand new newsletter – and to our 12<sup>th</sup> wonderful season! As RUACH board co-presidents, we are excited to share news with you about the many ambitious, engaging RUACH programs slated for the coming months – programs that involve the very young to the elderly, urban and suburban settings, art forms ranging from visual to musical and beyond, and more.

**We invite – and encourage – you to experience RUACH and attend our events! We know you’ll find them enjoyable and come away feeling both entertained and enriched.**

As you know, we aspire to bring the arts, in a Jewish context, to the greater Milwaukee area, including a number of underserved communities. *Thank you for your vital financial support of this unique endeavor!*

**We look forward to hearing from you – our critically important friends – with feedback on all things RUACH!**

Wishing you all the best,

Arleen Peltz, RUACH Board President and  
Rachel Eixenberger, RUACH Board Co-President

## Mission

RUACH enriches and educates Greater Milwaukee with creative arts programming, rooted in Jewish values.

RUACH partners with diverse and underserved populations to optimize the creative potential of individuals, from children to the elderly. Drawing on Jewish tradition, RUACH pioneers innovative approaches to the arts and education.



*Project: VITAL closing ceremony. Top, student drummers from Sherman Multicultural Arts School; middle, Nancy Weiss-McQuide and a Bader Hillel Academy student perform a skit; bottom, student drummers from Kathryn T. Daniels University Preparatory Academy.*

## RUACH Celebrates 10 Years+

RUACH recently celebrated its 10-year anniversary, and the occasion deserves a few moments pause for reflection on how far we've come in our now-almost-12 years.

Originated as an after school and extra-curricular music and art program at Yeshiva Elementary School, with limited programming at the Jewish Home and Care Center and Bader Hillel Academy, we have – happily – matured into an organization that has served most agencies in the Greater Jewish community.

Programming within the Greater Milwaukee at-large community, including public schools and community centers, has grown to be an important part of our service activity, along with our early, key constituencies.

*The great news is that we have tremendous potential and opportunities to grow even more, so we encourage you to continue – or begin! – your involvement and investment in RUACH now, ensuring that we can expand our good work and reach ever higher levels.*

Thank you for your support and encouragement. Looking forward to sharing the next 10 great years with you!

*Joshua Richman, RUACH Founder and Executive Director*

## RUACH Board of Directors and Staff

### Officers

President – Arleen Peltz  
Co-President – Rachel Eixenberger  
Vice President – Elizabeth Katz  
Behrendt  
Secretary – Bonnie Helfgott Krisztal  
Treasurer – Mickey Stein, CPA

Daniel Hyman  
Megumi Kanda  
Harriet McKinney Mandelman  
Mitch Moser  
David Ordan  
Stephen Richman  
Dr. Alan Shlimovitz  
Rabbi Chaim Twerski

### Directors

Dr. Patricia Ellis  
Jay Frank  
Elissa Guarnero  
James Hiller

### Staff

Executive Director – Joshua Richman  
Program Manager – Yaffa Karan  
Operations Manager – Nicole Carver



# PROGRAM HIGHLIGHTS

## The Benefits of Music Go Far Beyond the Rehearsal Hall

Interview with Zevy Perlman, Grade 8, Yeshiva Elementary School

*For nearly 12 years, RUACH has provided students at Yeshiva Elementary School (YES) with quality music and arts programming. The students have benefited in ways that go beyond the arts and have learned important values and social skills such as teamwork, respecting and listening to others, and self-discipline. Through these programs, they also have gained a love of the arts, greater self-confidence, and wonderful memories that will last a lifetime.*



2016 RUACH-YES Boys Ukulele Ensemble with music instructor Dr. Adam Margolis

**RUACH** recently had the opportunity to hear from Zevy Perlman, an 8th grader at YES, one of the many students who have benefited from RUACH's programming throughout the years. He shared some of his experiences and memories surrounding our arts programming.

**RUACH:** In which RUACH programs did you take part?

**Zevy:** In the first grade, I took piano lessons through RUACH. Also in fourth grade, I participated in the RUACH sponsored play, *'The Seven Golden Buttons,'* directed by my grandfather, Rabbi Tuvia Perlman. I was in the choir and sang a solo. [In the sixth grade], I participated in the RUACH-YES Boys Choir. And, [in seventh grade], I was presented with a special opportunity, not only to again join the RUACH-YES Boys choir directed by Mr. Chad Nashban, but I was also offered a spot in the RUACH-YES Ukulele Ensemble taught by

Dr. Adam Margolis. The chords on the ukulele were easy to learn, and I looked forward to lessons each week.

**RUACH:** Wow! It sounds like you had some wonderful opportunities throughout your time at YES. Has your involvement with music created any special memories for you?

**Zevy:** Music brings my family together. [In sixth grade] there was one song that fathers participated in, and it was special to be able to perform with my father. Also, I like watching my siblings dance around the room when I play fast tunes, and I like when my family sits and sings together. My younger brother loves the guitar and string instruments and takes guitar lessons, so I thought it would be fun to be able to play a string instrument [ukulele] too. Maybe when he's older, we'll play together!

**RUACH:** That's wonderful! Sounds like you're building some beautiful memories around music.

**Zevy:** Music is relaxing for me, and I use it as a positive outlet when I am feeling negative. Music and singing bring me joy, and I appreciate that RUACH recognized my abilities and helped me to grow and evolve into the musician I am today. I hope I continue to learn more and expand my musical talent even more.

Through RUACH's core partner programming, students like Zevy can gain important exposure to the well-documented benefits of music and art education. Learn more on our website at [www.ruachmilwaukee.org/our-causes/core-partner-programming/](http://www.ruachmilwaukee.org/our-causes/core-partner-programming/)



### A Bit About Us.....

In our ten years of existence, RUACH has grown to provide creative arts opportunities, set against a Jewish backdrop, to a broadly diverse sample of Greater Milwaukee residents.

Over time, RUACH has extended its reach and its impact to include music, visual arts, dance, creative writing, and theater programming for a wide variety of Jewish *and* at-large constituencies, particularly economically and ethnically underserved populations, including youth and the elderly. RUACH has become a collaborative organization, partnering with many local organizations and artists at venues such as schools, assisted living facilities, community centers and arts facilities.



6310 N. Port Washington Road  
Milwaukee, WI 53217

## RUACH PROGRAMS

*Core Partner Programming* provides unique and specialized programming for and with RUACH's core partners, the Jewish Home and Care Center and Yeshiva Elementary School.

*Project: VITAL (Values in the Arts & Life)* teaches diverse constituencies about positive Jewish-based personal and social values as well as the value of arts education, using a community collaboration format, in which varied groups work on a common project.

*RUACH Onstage* brings excellent music and other arts presentations for all to enjoy. It presents concerts, exhibits, and more, featuring a wide variety of highly talented local and international musicians, visual artists, lecturers, and guest presenters, many of whom are learned in Jewish music and arts traditions.

*Special Endeavors* engage in a number of creative projects that fall outside of RUACH's regular programming, but which help RUACH to achieve its mission of educating the community through creative arts programming rooted in Jewish values.



Join us at our next, always-delightful Yiddish Music Series

event, and enjoy

*Adam Margolis and Friends*

in a performance at the

Helen Bader Center

Jewish Home and Care Center

1414 N. Prospect Avenue

Sunday, December 25

10:00 a.m. to 11:00 a.m.

There is no charge  
for this performance.

## **Please Donate!**

RUACH's programs are made possible by the generosity of foundations, corporations, government entities, and individuals *like you*. Consider making a gift to RUACH to help us continue to fulfill our mission and reach even more people with our high-impact programs.

To make a gift, please mail a check to the address below, made payable to RUACH, Inc., or visit our website to donate online. Details inside.

## **Contact Us**

Give us a call for more information about our services and programs or to make a donation.

### **RUACH, Inc.**

6310 N. Port Washington Road  
Glendale, WI 53217-4300  
(414) 367-4890

general@ruachmilwaukee.org  
www.ruachmilwaukee.org